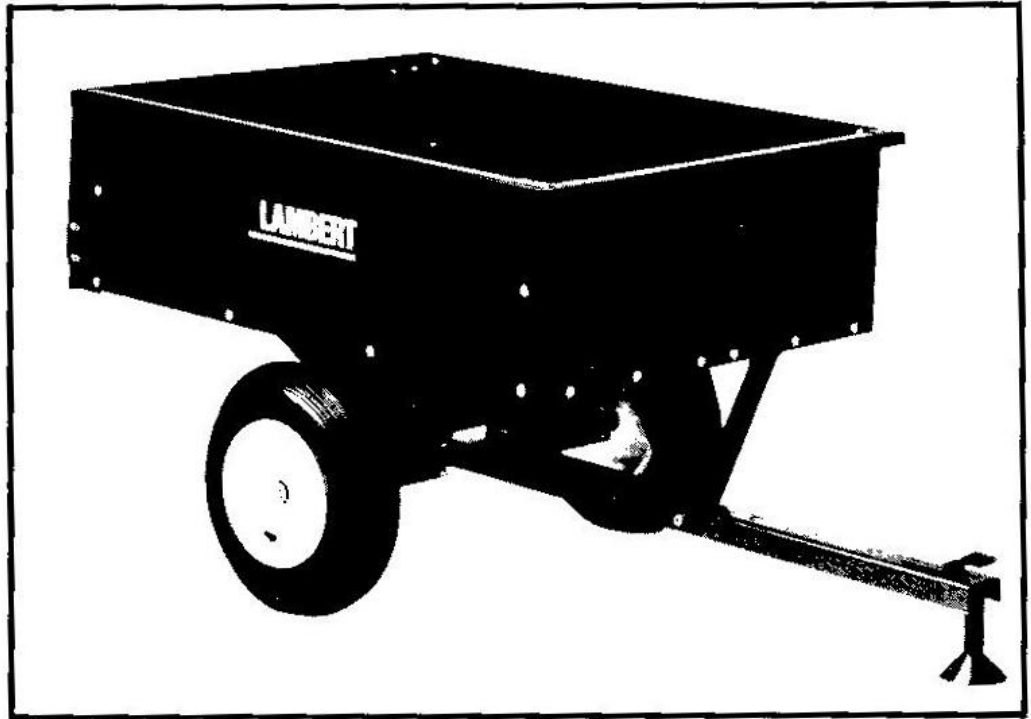




Heavy-Duty Utility Dump Cart HT-10RTA



IMPORTANT SAFETY PRECAUTIONS

1. DO NOT carry passengers in cart. It is designed to carry materials only.
2. DO NOT tow cart on public thoroughfares.
3. Use LOW speeds, 3 M.P.H. or less, when pulling heavy loads.
4. AVOID towing of cart on STEEP slopes.
5. ALWAYS hitch cart to tractor and make certain tongue latch is engaged before loading.
6. Make CERTAIN rear of cart is clear before dumping.
7. DO NOT overload cart, MAXIMUM LOAD capacity is 750 lbs.

MAINTENANCE

1. Check tire pressure regularly; 30 PSI maximum is recommended.
2. Grease wheels every 10 hours of operation of cart, using grease fittings on wheel hubs.
3. Add a few drops of light oil at pivot of tongue latch (27) every 3 or 4 weeks usage and before storing for long periods.
4. Wipe cart clean of debris and moisture after each use.

DUMPING OPERATIONS

Lift Tailgate (19) up until Tailgate Latches (20) and Pins (21) are disengaged and remove Tailgate. Release Tongue Latch (27) to dump Cart. See Fig. 3 and 5.

The merchandise you have purchased from us has been carefully engineered and manufactured under Lambert Corporation's rigid quality standards and should give you satisfactory dependable operation. However, like all mechanical merchandise, it may occasionally require adjustment or maintenance. Should you ever need technical assistance, please contact the Service Department noted below.

SAVE THIS MANUAL

This manual is your only reference to all replacement parts and service contacts.

INSTRUCTIONS FOR ORDERING PARTS

Note: Be sure to specify color (if any) of any parts you order. (Minimum Parts Order Charge: \$10.00)

To eliminate error and speed delivery, follow these suggestions.

1. Address all parts orders or correspondence regarding service to:
Parts Department
Mid West Products, Inc.
PO Box 301
Phillipsburg, OH 45354-0301
(937) 337-3641 Ext. 108
2. Print or type your name and address clearly.
3. Explain where and how to ship.
4. Give correct model number from owner's manual or product and state color if part is painted.
5. Give part number, as well as a description of the part, and the quantity you need of each part.
6. Inspect all shipments you receive. If any parts are damaged or missing, file a claim with the carrier before accepting.
7. Parts will be shipped immediately upon receipt of your order and payment. We can accept check or if you prefer to use your Credit Card, state your name as it is on your card, card number, expiration date, 3/4 digit verification number and billing ZIP code.

ASSEMBLY INSTRUCTIONS

Lay out all parts from carton and parts bag on a flat surface. READ EACH STEP OF INSTRUCTIONS COMPLETELY BEFORE STARTING ASSEMBLY. Refer to Fig. 6 to assist in identifying parts.

TOOLS REQUIRED: One medium Screwdriver, two 1/2" Open End Wrenches and two 7/16" Open or Box End Wrenches. The 1/2" Wrenches are for Nuts (3) and Screws (4 and 8). The 7/16" Wrenches are for Screw (7) and Nuts (9). A Ratchet Wrench with 7/16" and 1/2" Sockets will speed assembly.

Use Screwdriver to hold Screw and tighten Nut with Wrench. This limits Screwdriver slipping and marking paint. Always place Lock Washers under Nut.

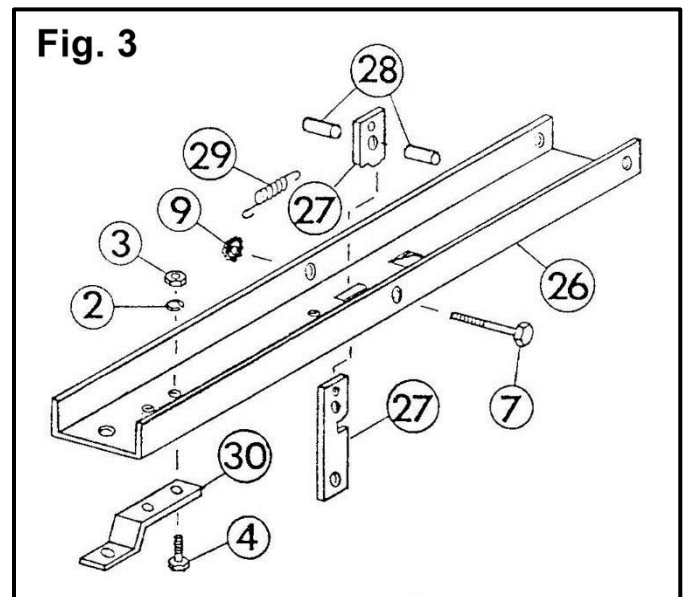
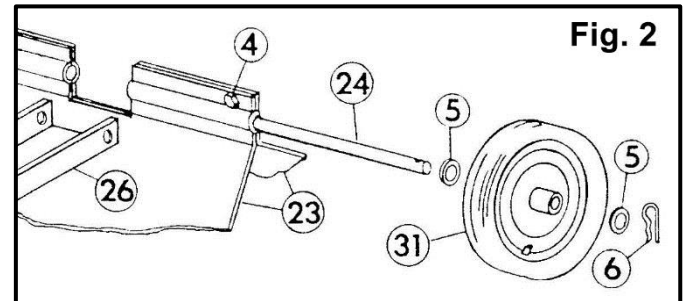
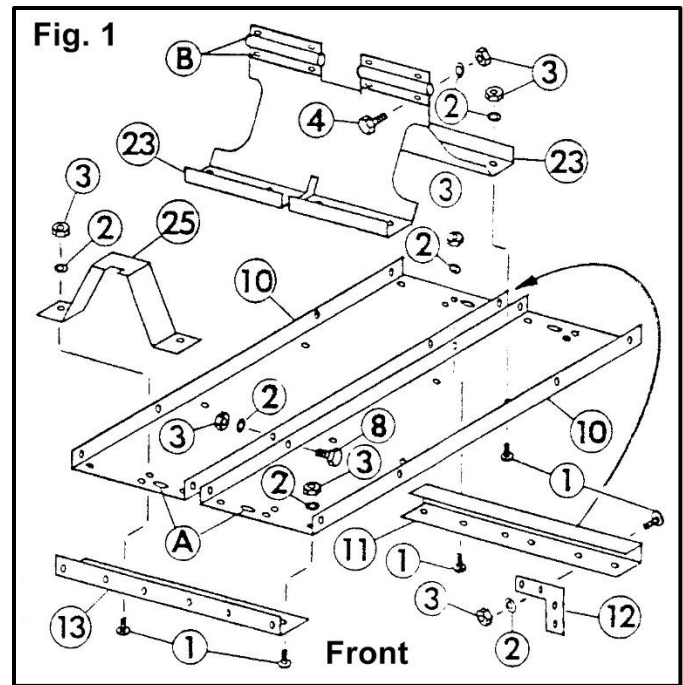
ALL FASTENERS MUST BE INSTALLED LOOSELY UNTIL INSTRUCTED TO TIGHTEN SECURELY.

1. Lay out two Bottom Panels (10) on clean, flat surface with flanges pointing up and OVAL HOLES (A) TO CENTER OF ASSEMBLY. See Fig. 1.

IMPORTANT: BE CERTAIN OVAL HOLES (A) IN BOTTOM PANELS ARE TO CENTER OF ASSEMBLY. OVAL HOLES IN REAR CROSS BRACE (11) WILL NOT MATCH IF BOTTOM PANELS ARE IMPROPERLY ASSEMBLED. SEE FIG. 1.

Place Screws (8) in four holes of center flanges of Bottom Panels (10) and LOOSELY fasten with Lock Washers (2) and Nuts (3). See Fig. 1.

2. Fasten front Cross Brace (13) LOOSELY to one end of Bottom Panels (10) with four Screws (1), lock washers (2) and nuts (3). LEAVE CENTER HOLE in each bottom panel OPEN. Locate tongue support (25) at open holes and attach LOOSELY with two fasteners (1, 2, and 3). See Fig. 1.
3. Slip or rotate channel form of two Wheel Axle Supports (23) UNDER center fasteners in center flanges of Bottom Panels (10). Attach Supports (23) VERY LOOSELY to Bottom Panels with eight fasteners (1, 2, and 3). Assemble opposite ends of Wheel Axle Supports VERY LOOSELY with eight fasteners (4, 2, and 3) in holes (B). See Fig. 1.
4. Slide Wheel Axle (24) through Wheel Axle Supports (23) to center cutout. With legs up, place end of Hitch Tongue (26) with two holes in legs, in cutout and rest opposite end on Tongue Support (25). Slide Axle through Tongue and into opposite side of Wheel Axle Supports. See Fig. 2.
5. Place one Washer (5) on Wheel Axle, one Wheel (31), second Washer (5) and secure with one Hairpin Cotter (6). Push Axle completely through Wheel Axle Supports and install second Wheel as above. See Fig 2.
6. Insert Screw (7) in center side hole in Hitch Tongue (26), add one Spacer (28), slip Latch (27) in slot of



Hitch Tongue and pass Screw (7) through larger hole in bottom end of Latch. BE CERTAIN NOTCH IN LATCH ENTERS NOTCH IN TONGUE SUPPORT (25). Add second Spacer (28), and push Screw through and out opposite side of Hitch Tongue, install Nut (9) on Screw and tighten securely. BE CERTAIN LATCH (27) PIVOTS FREELY BUT WITH MINIMUM SIDE TO SIDE MOVEMENT. See Fig 3.

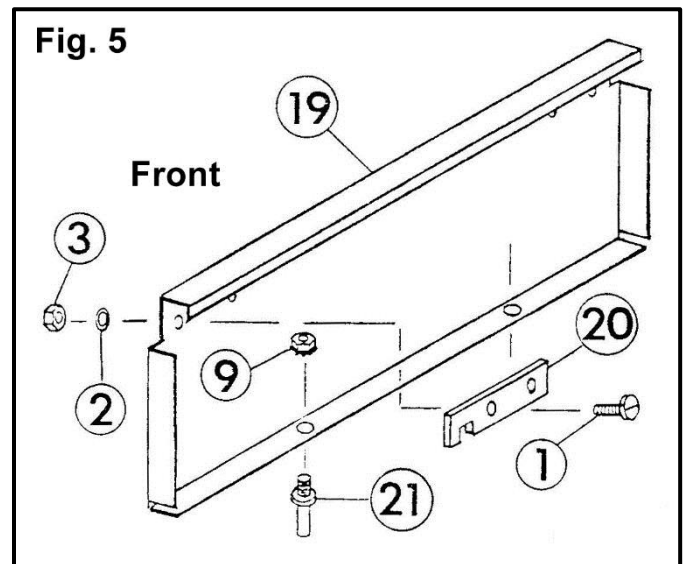
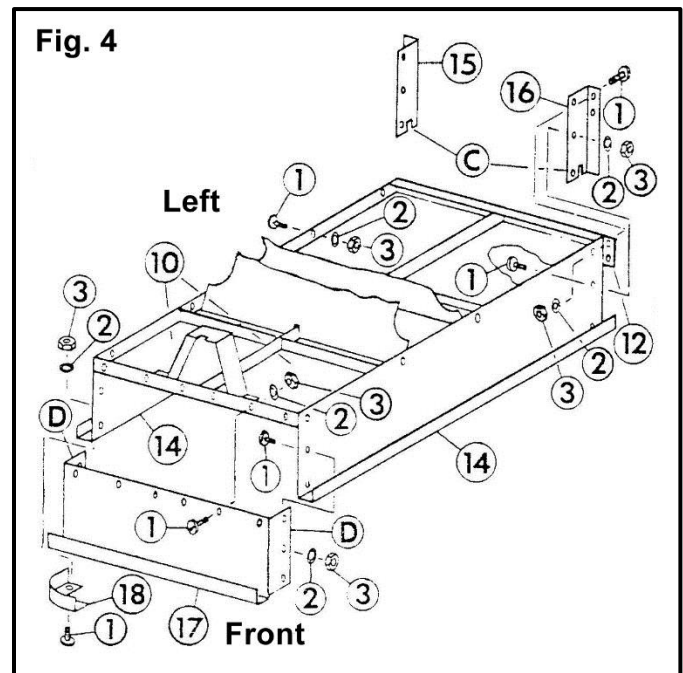
- Attach centered end of Spring (29) in small bottom hole of Latch (27). Using Pliers, stretch Spring (29) until offset hook slips into small hole in Tongue (26). Place Hitch Bracket (30) on Hitch Tongue and fasten securely with two each Screws (4), Lock Washers (2) and Nuts (3). Use your Hitch Pin to line up large hole in Bracket and Hitch Tongue. See Fig. 3.

TIGHTEN ALL FASTENERS SECURELY. Turn cart over on its wheels to finish assembly.

- Assemble **LOOSELY** two Corner Brackets (12) **INSIDE** each end of Rear Cross Brace (11) using two fasteners (1, 2, and 3) at each end. Place this assembly on free end of Bottom Panels (10) and fasten **LOOSELY** with six fasteners (1, 2, and 3). See Fig. 1.
- Install one side panel (14) **LOOSELY** to left side bottom panel (10) with two fasteners (1, 2, and 3) **IN CENTER HOLES LEAVING END HOLES OPEN**. Attach rear corner brace (15) to side panel using three fasteners (1, 2, and 3). **BE CERTAIN SLOT (C) IN SIDE PANEL AND CORNER BRACE ARE IN LINE**. **LOOSELY** fasten corner brace (15) to corner bracket (12) with two fasteners (1, 2, and 3). Use same procedure for opposite side using rear corner brace (16). See Fig. 4.
- Attach front panel (17) **LOOSELY** to side panels (14) and front cross brace (13) using twelve fasteners (1, 2, and 3). **BE CERTAIN END FLANGES (D) OF FRONT PANEL ARE OUTSIDE SIDE PANELS**. Place two corner braces (18) at front corners to connect side and front panels. Fasten using four fasteners (1, 2, and 3). See Fig. 4.

TIGHTEN ALL FASTENERS SECURELY

- Fasten two tailgate latches (20) **LOOSELY** to **OUTSIDE** of tailgate (19) with two fasteners (1, 2, and 3) each side. Insert two lock pins (21) in holes of bottom tailgate flange and **LOOSELY** fasten with nuts (9). See Fig. 5. Slide tailgate into position with latches (20) sliding into slots (C) and pins (21) into holes in rear cross brace (11). **BE CERTAIN** tailgate is completely seated in slots (C) and holes in rear cross brace. Tighten all fasteners securely. See Fig. 4 and 5.

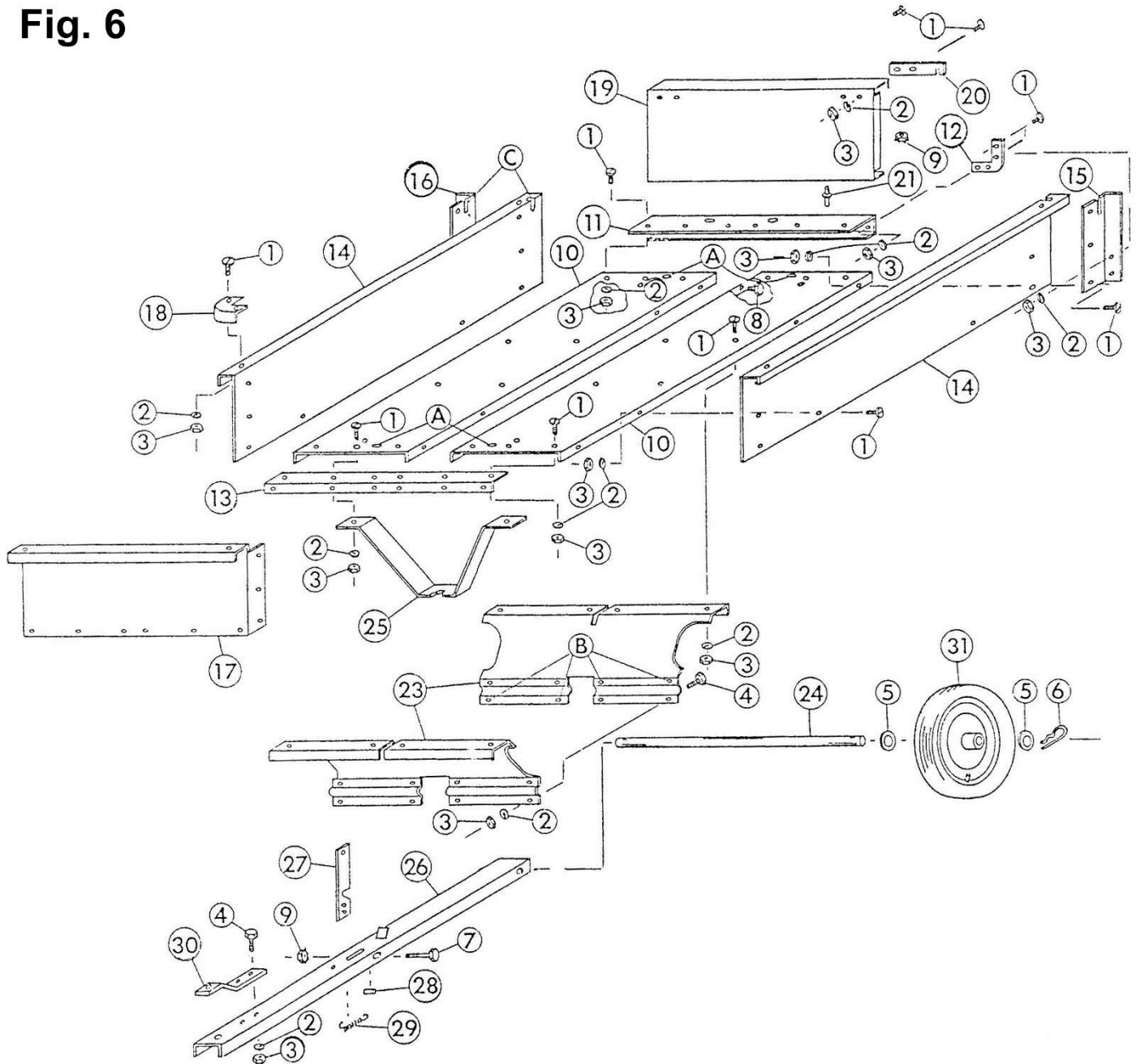


YOUR CART IS NOW READY TO SERVE YOUR HAULING CHORES. USE IT SAFELY AND WISELY FOR TROUBLE FREE OPERATION.

GUARANTEE

The merchandise you have purchased from us has been carefully engineered and manufactured under Lambert Manufacturing's rigid quality standards and should give you satisfactory, dependable operation. However, like all mechanical merchandise, it may occasionally require adjustment or maintenance. Should you need technical assistance, please contact Lambert Manufacturing.

Fig. 6



PARTS LIST

Key	Part No.	Description	Qty
1	X-1637	5/16-18x5/8 Slot Truss Hd. Sc.	58
2	X-1025	5/16 Med. Split Lock Washer	72
3	L-60	5/16-18 Std. Hex Nut	72
4	L-59	5/16-18x3/4 Hex Hd. Cap Sc.	10
5	X-1048	3/4 Flat Washer	4
6	X-1229	Hair Pin Cotter	2
7	X-1653	1/4-20x3 1/2 Hex Hd. Cap Sc.	1
8	L-307	5/16-18x5/8 Hex Hd. Cap Sc.	4
9	X-1654	1/4-20 Hex "Kep" Nut	3
10	53-D1243	Bottom Panel	2
11	53-D1255	Rear Cross Brace	1
12	53-B1229	Rear Corner Bracket	2
13	53-D1216	Front Cross Brace	1
14	53-D1244	Side Panel	2
15	53-C1217L	Rear Corner Brace, Left	1

Key	Part No.	Description	Qty
16	53-C1218R	Rear Corner Brace, Right	1
17	53-D1245	Front Panel	1
18	53-A1107	Front Corner Brace	2
19	53-D1246	Tailgate Panel	1
20	53-A1235	Tailgate Latch	2
21	53-A1262	1/4-20 Tailgate Pin	2
23	53-D1254	Wheel Axle Support	2
24	53-A1225	Wheel Axle	1
25	53-D1220	Tongue Support	1
26	53-D1253	Hitch Tongue	2
27	53-B1263	Tongue Latch	1
28	53-A1261	Latch Spacer	2
29	53-A1230	Latch Spring	1
30	53-A1231	Hitch Pin Bracket	2
31	53A-1237	Wheel/Tire Assembly	2